

# U.S. Foreign Assistance

## Fiscal Year 2008

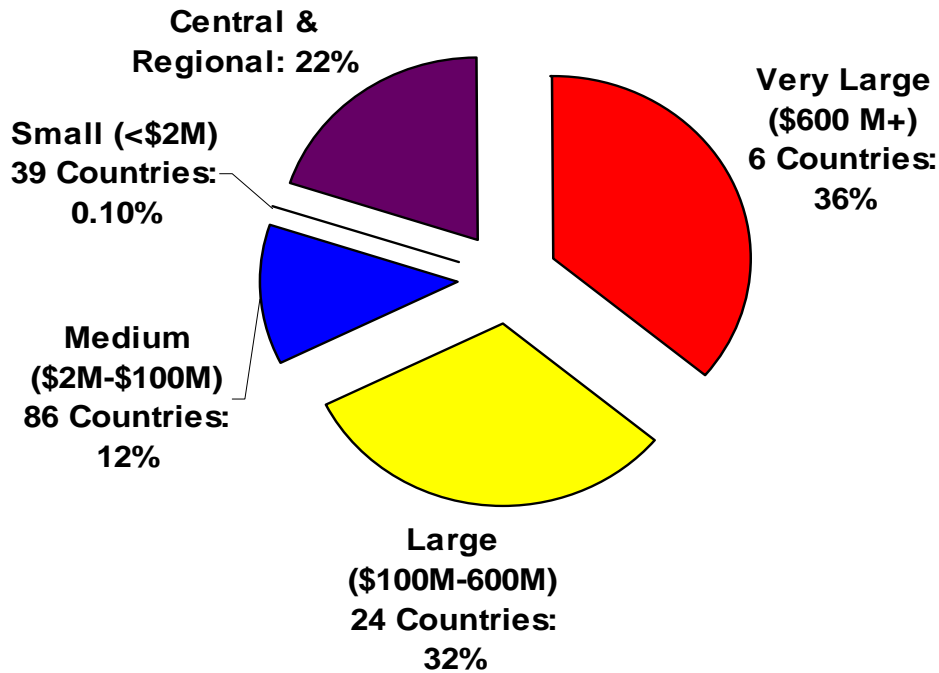
### CBJ Request

including  
MCC disbursements



Office of the Director of U.S. Foreign Assistance  
February 2007

# ***FY2008 Allocations by Country Program Size*** *(including projected MCC disbursements)*



<b>Largest (in \$ Millions)</b>	
Israel	\$2,400,500
Egypt	\$1,720,870
Afghanistan	\$1,067,050
Pakistan	\$785,000
Sudan	\$679,200
South Africa	\$609,000
Colombia	\$589,710
Kenya	\$540,424
Nigeria	\$533,550
Jordan	\$513,219
Ethiopia	\$505,965
Iraq	\$391,800

**Total # of Countries Receiving U.S. Foreign Assistance = 155**

***FY 2006 & FY 2008 Allocations (including MCC disbursements)***  
***% of Total by Country Category and Objective***

<b>Objective</b>	<b>FY 2006</b>	<b>FY 2008</b>
<b><i>Peace &amp; Security</i></b>	<b>38%</b>	<b>33%</b>
<b><i>Governing Justly &amp; Democratically</i></b>	<b>7%</b>	<b>7%</b>
<b><i>Investing in People</i></b>	<b>28%</b>	<b>34%</b>
<b><i>Economic Growth</i></b>	<b>16%</b>	<b>16%</b>
<b><i>Humanitarian Assistance</i></b>	<b>11%</b>	<b>10%</b>
<b><i>Total</i></b>	<b>100%</b>	<b>100%</b>

*Note: Brackets in the original image group 'Governing Justly & Democratically' (7%) and 'Investing in People' (28%) for FY 2006 to total 35%, and 'Investing in People' (34%) and 'Economic Growth' (16%) for FY 2008 to total 50%. The image also shows a bracket for 'Investing in People' (34%) and 'Economic Growth' (16%) for FY 2008 to total 50%, and another bracket for 'Investing in People' (34%) and 'Economic Growth' (16%) for FY 2008 to total 50%. The image also shows a bracket for 'Investing in People' (34%) and 'Economic Growth' (16%) for FY 2008 to total 50%.*

# FY 2006 Assistance Allocations by % within Country Categories by Objective

FY 2006 Country Category by Objective, including MCC disbursements					
	Peace and Security	Governing Justly and Democratically	Investing in People	Economic Growth	Humanitarian Assistance
Rebuilding	40%	12%	15%	19%	15%
Developing	39%	7%	30%	21%	3%
Transforming	17%	7%	56%	19%	1%
Sustaining	79%	3%	9%	9%	0%
Restricted	45%	28%	17%	5%	5%
Regional	13%	15%	25%	30%	17%
Global	15%	4%	44%	9%	28%

# ***FY2008 Assistance Allocations by % within Country Categories by Objective***

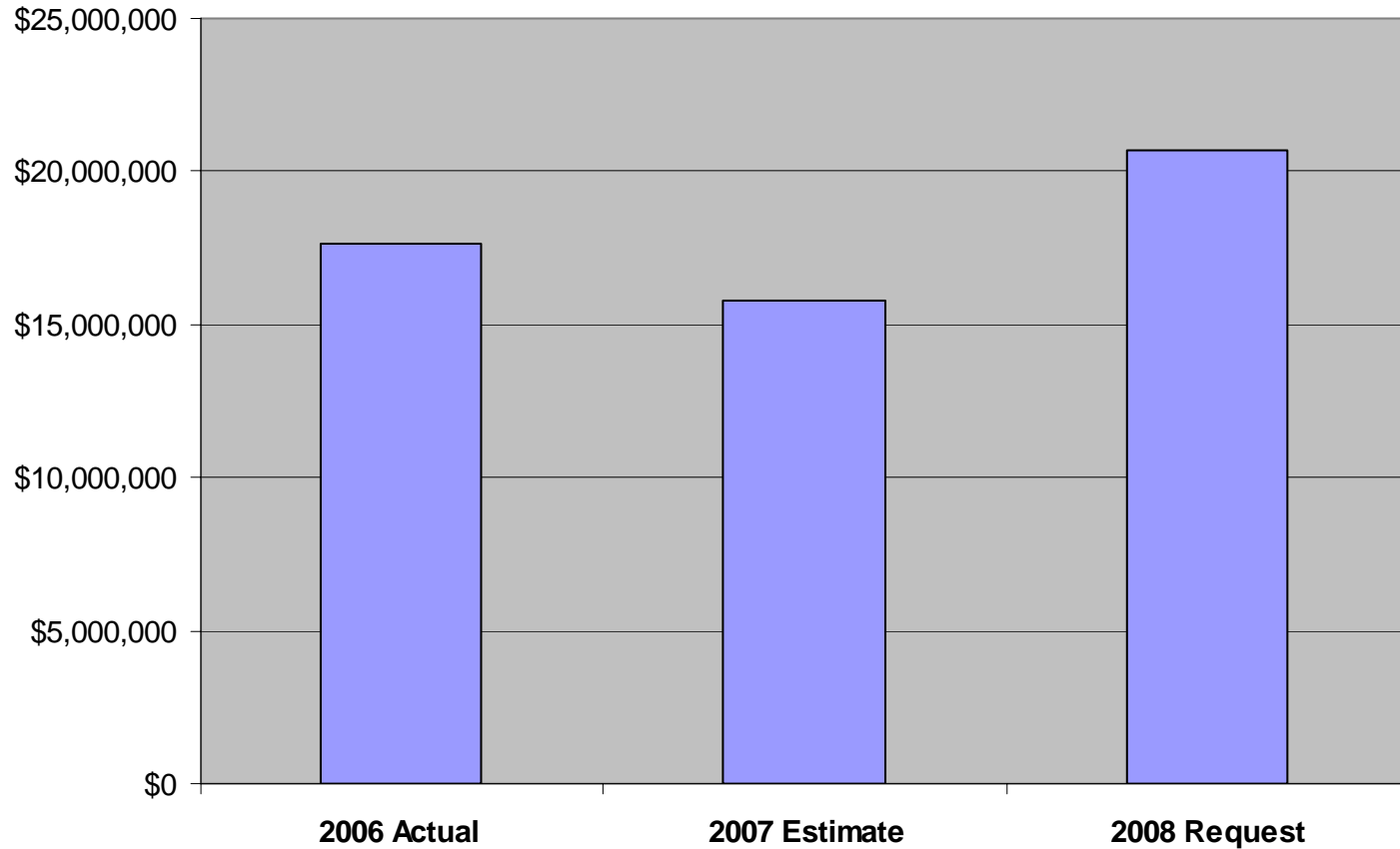
<b>FY 2008 Country Category by Objective, including projected MCC disbursements</b>					
	Peace and Security	Governing Justly and Democratically	Investing in People	Economic Growth	Humanitarian Assistance
Rebuilding	35%	18%	16%	20%	11%
Developing	32%	6%	44%	17%	1%
Transforming	7%	4%	49%	40%	0%
Sustaining	76%	1%	21%	1%	0%
Restricted	2%	63%	16%	8%	11%
Regional	13%	12%	36%	38%	1%
Global	16%	3%	34%	7%	41%

**\* *Outlined cells denote assistance priorities***

# ***Total Foreign Assistance Levels***

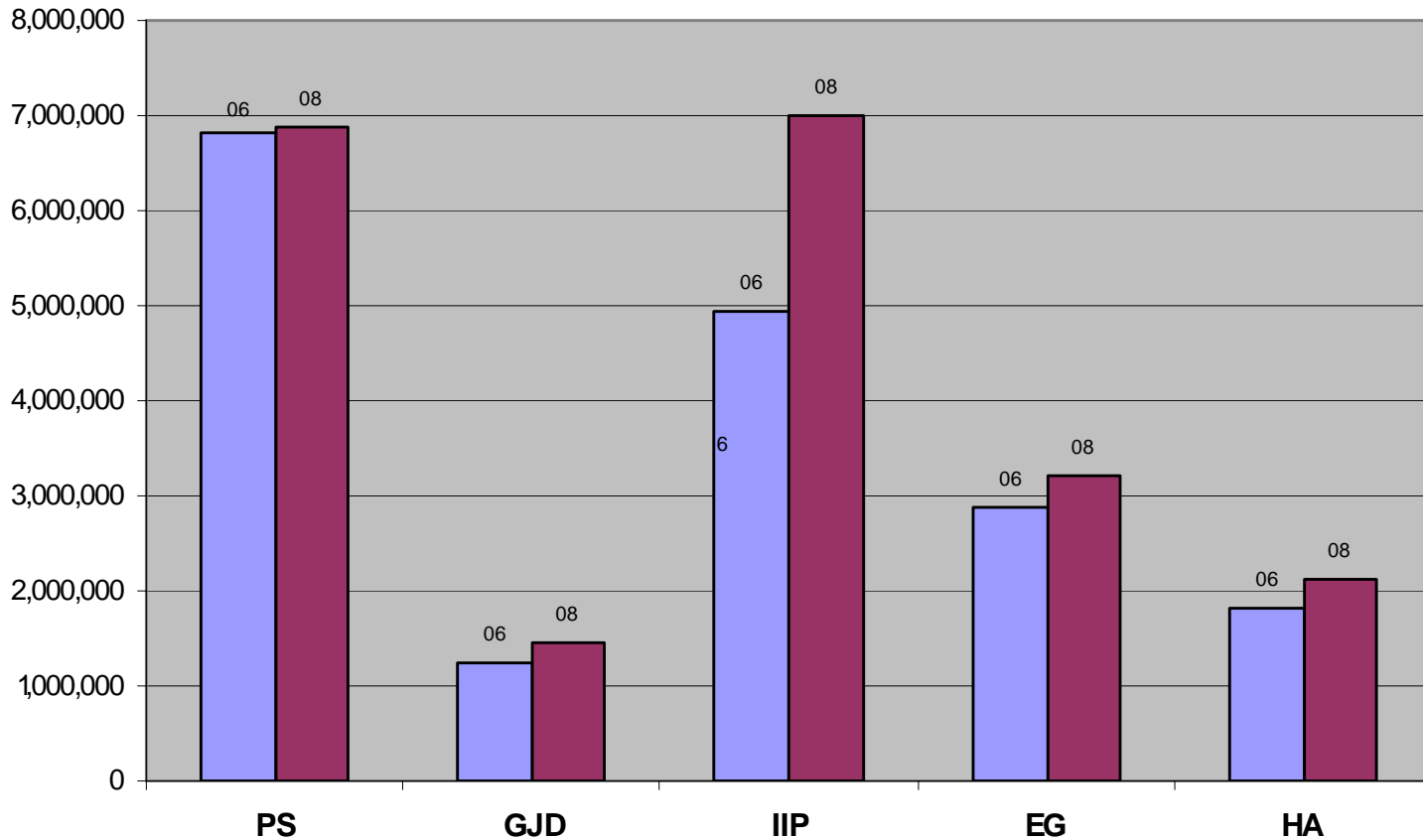
## ***2006-2008***

***(In \$ Millions)***



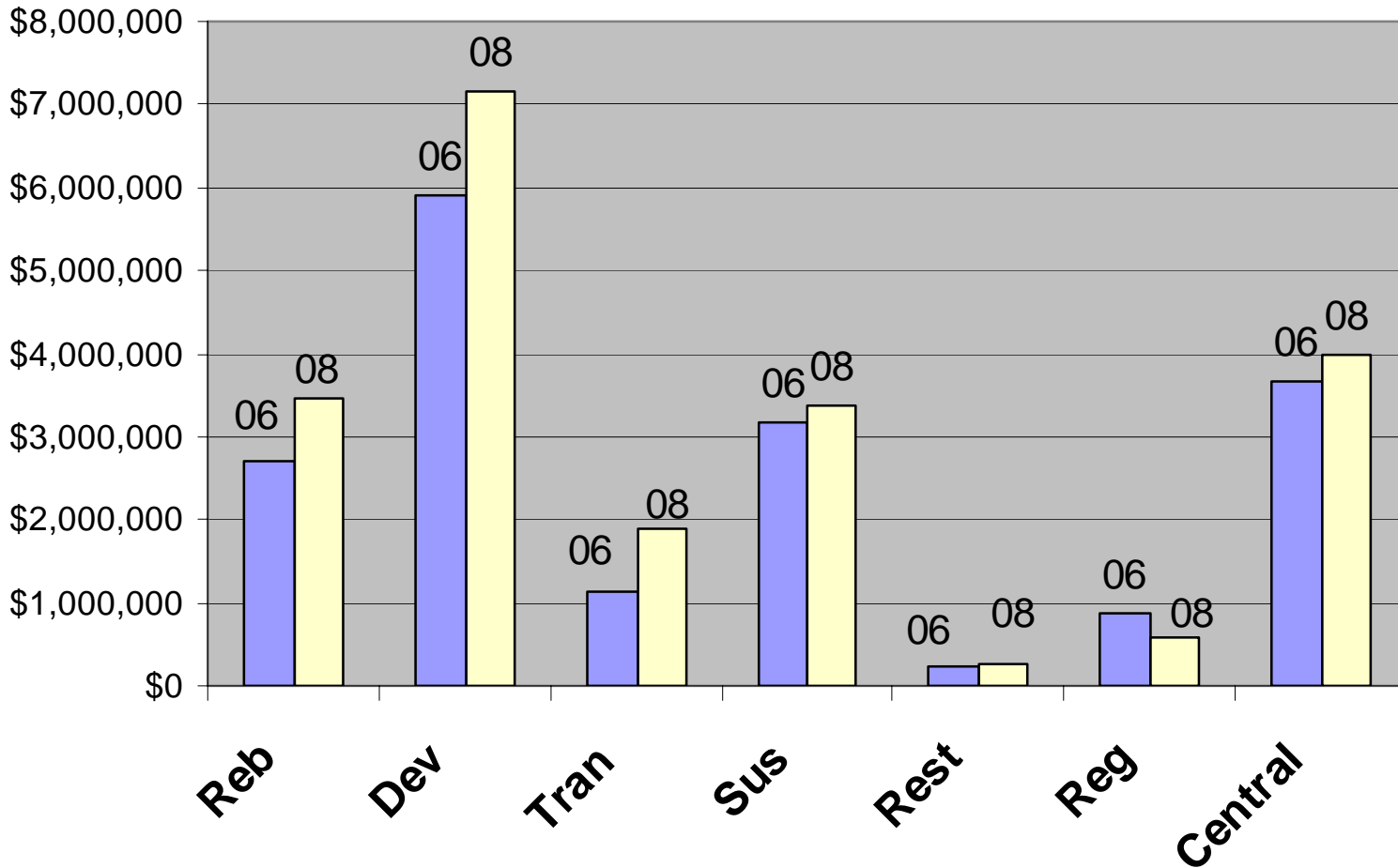
# ***Allocations to Objectives by Year***

***(In \$ Millions)***



# ***Allocations to Country Categories by Year***

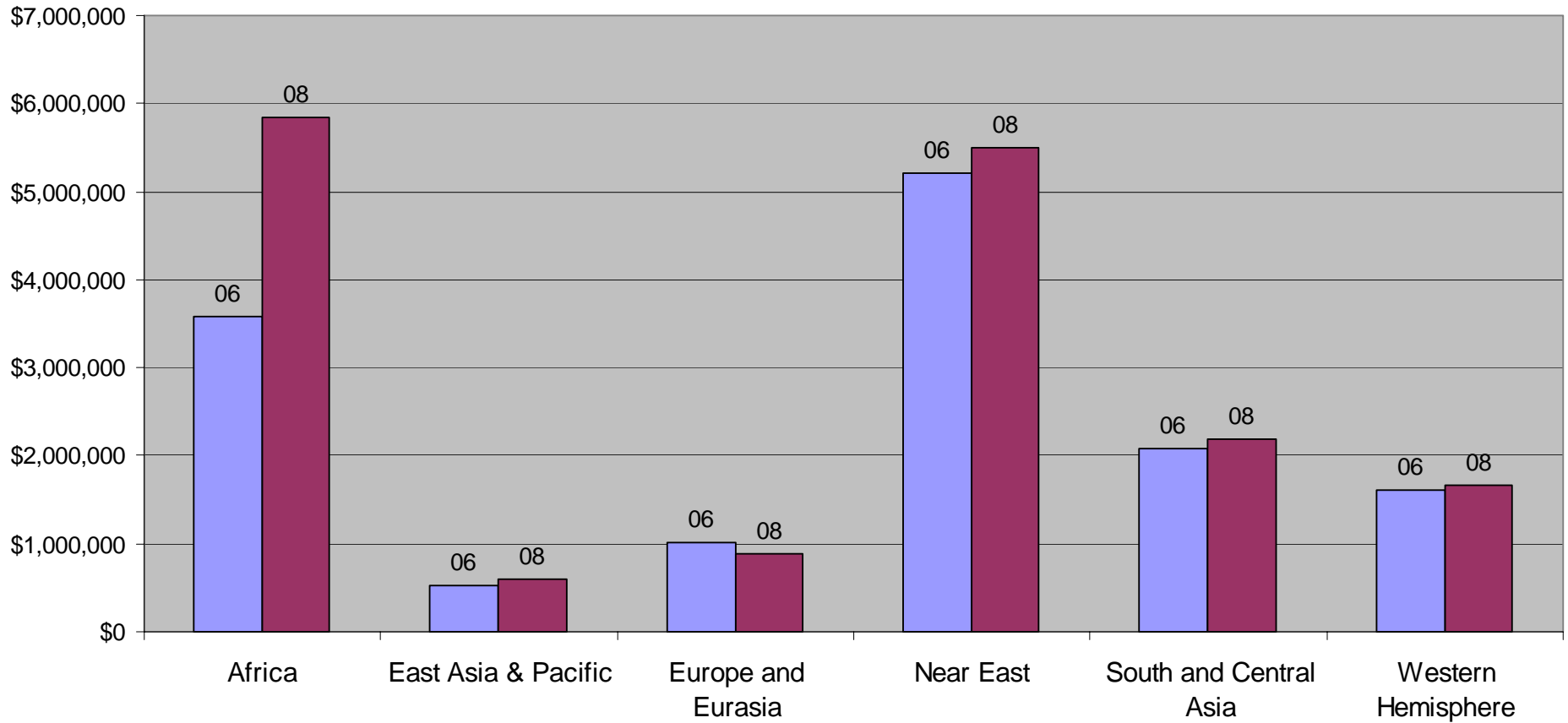
***(In \$ Millions)***





# ***Allocations to Regions by Year***

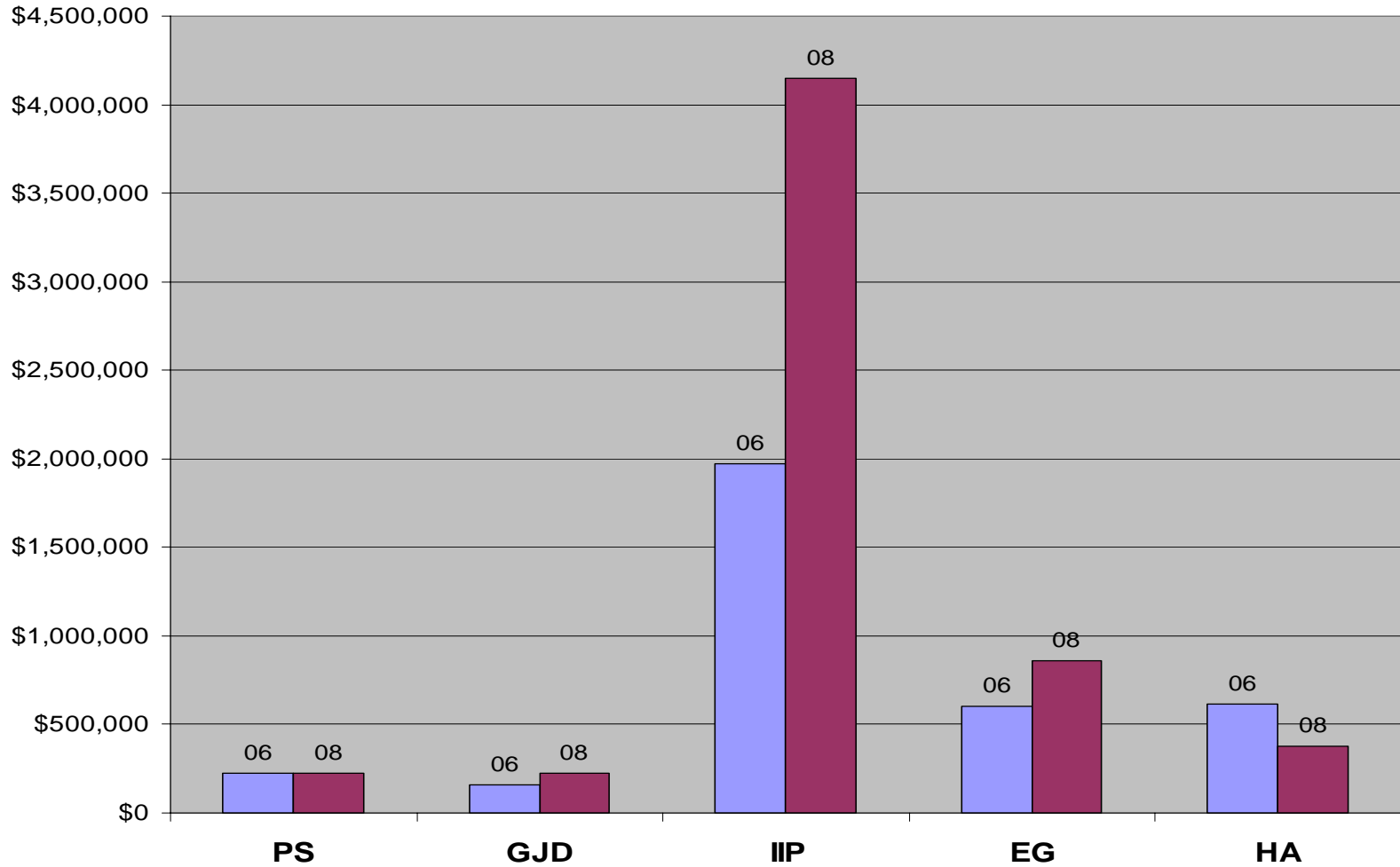
***(In \$ Millions)***



# *Allocations to Objectives by Year*

## *Africa Region*

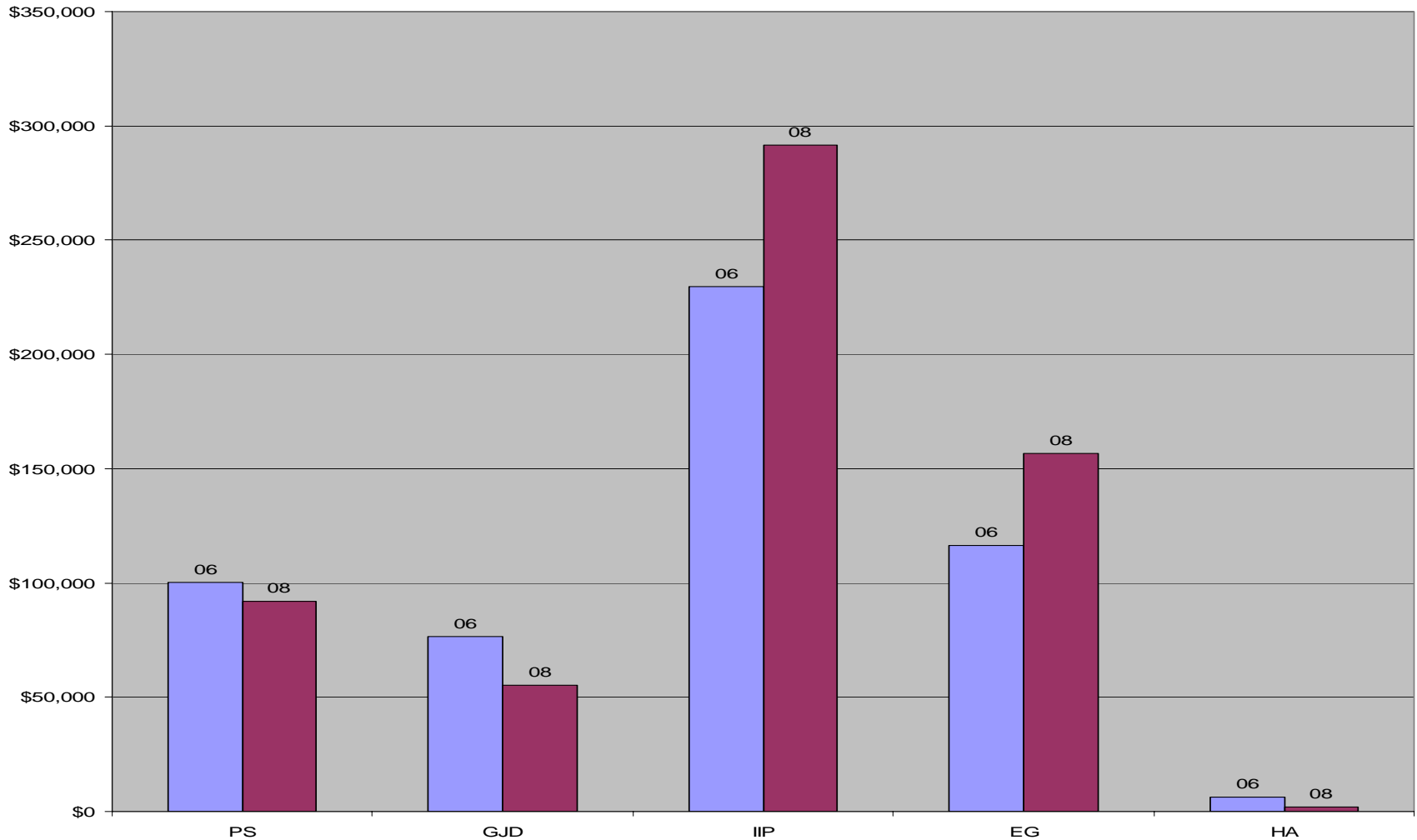
*(In \$ Millions)*



# ***Allocations to Objectives by Year***

## ***East Asia and Pacific***

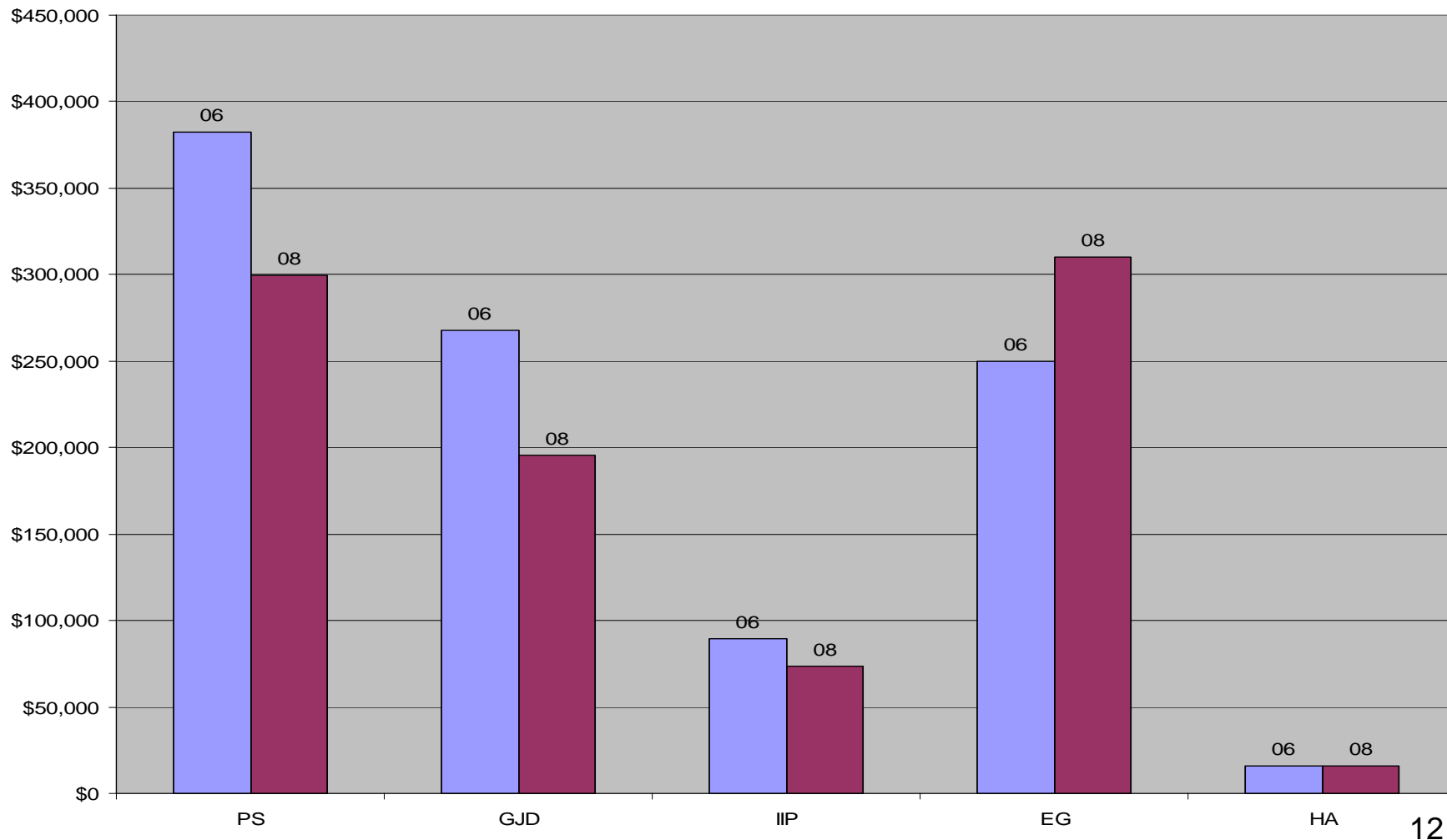
***(In \$ Millions)***



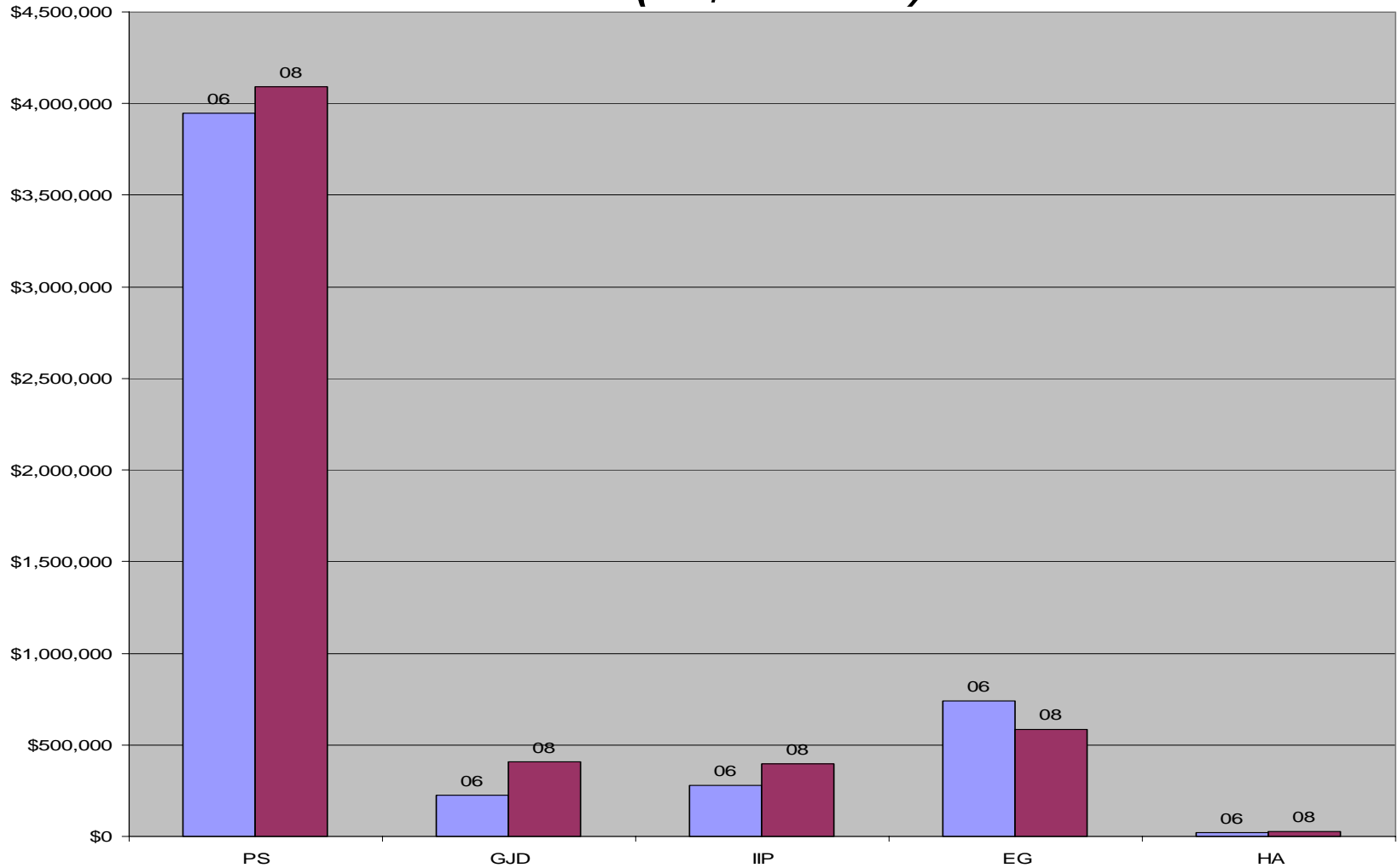
# *Allocations To Objectives by Year*

## *Europe and Eurasia*

*(In \$ Millions)*



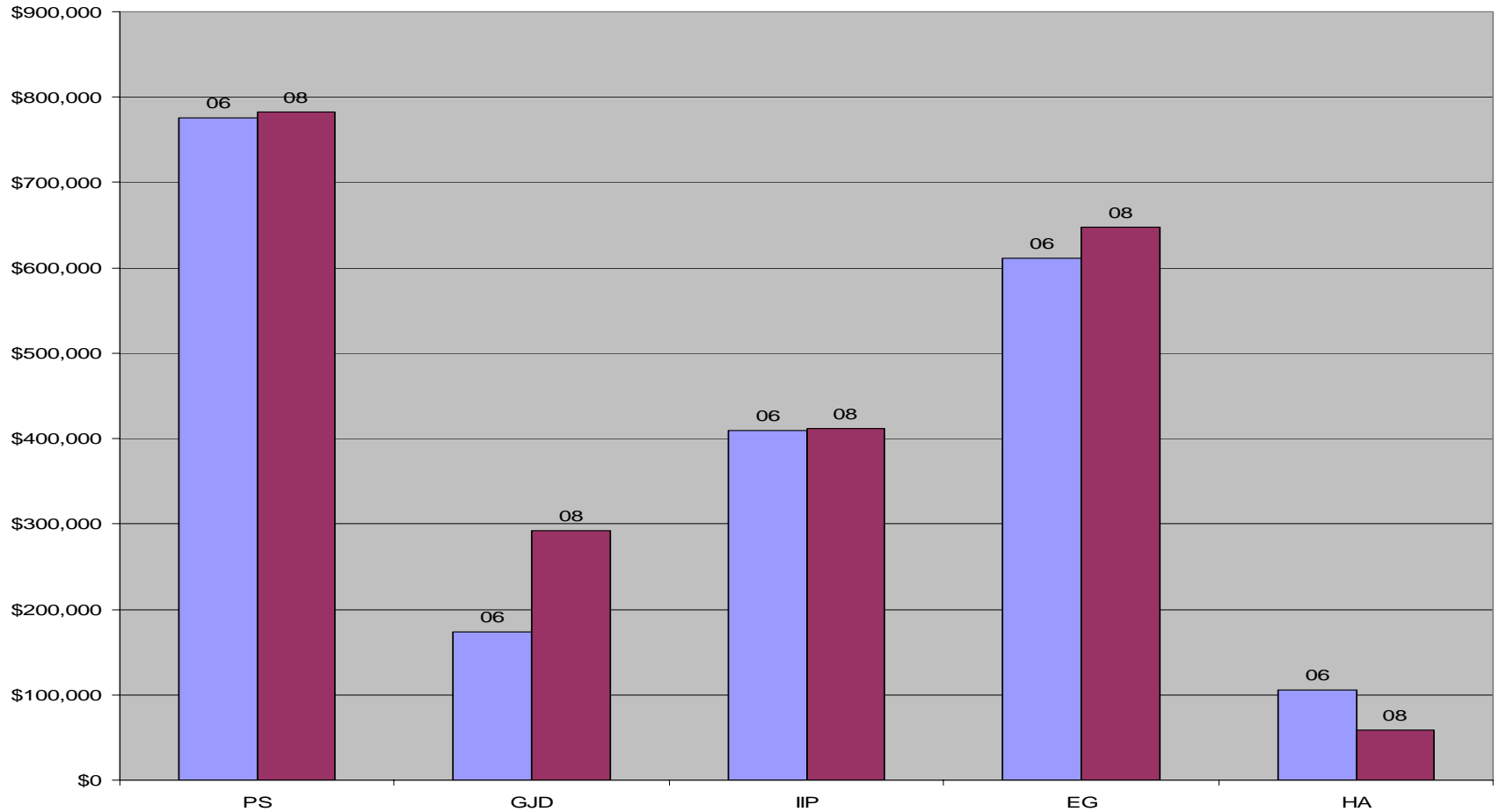
# ***Allocations to Objectives by Year Near East (In \$ Millions)***



# *Allocations to Objectives by Year*

## *South and Central Asia*

*(In \$ Millions)*



# *Allocations to Objectives by Year*

## *Western Hemisphere*

*(In \$ Millions)*

